



© 2019 Daniele Prandelli

W: www.iaminwallstreet.com

E: info@iaminwallstreet.com

2019 Soybeans Bulletin

Forecast & Strategy

31st of December 2018 UPDATE

Based on Daniele Prandelli's Studies

DISCLAIMER Daniele Prandelli provides economic researches and analysis. The information contained herein is for general education and/or analysis purposes and is not intended as specific advice or recommendations to any person or entity. Any reference to a transaction, trade, position, holding, security, market, or level is purely meant to educate readers and/or analysis of the Market about possible risks and opportunities in the marketplace and are not meant to imply that any person or entity should take any action whatsoever without first evaluating such action(s) in light of their own situation either on their own or through a professional advisor. The methods presented are not solicitations of any order to buy or sell. If a person or entity does not believe they are qualified to make such decisions, they should seek professional advice. The prices listed are for reference only and are in no way intended to represent an actual trade, entry price or exit price conducted by Daniele Prandelli, portfolios managed by any entity affiliated with Daniele Prandelli, or any principal or employee of Daniele Prandelli, or any of his affiliates. This information is not a substitute for professional advice of any nature, including tax, legal, and financial. While we believe the information contained herein to be accurate, all numbers should be verified by the reader through independent sources. It should not be assumed that the methods, techniques, or indicators presented in these products will be profitable or that they will not result in losses. There is no assurance that the strategies and methods presented in this book, document or website will be successful for you. Past results are not necessarily indicative of future performance. Trading securities, options, futures, or any other security involves risk and can result in the immediate and substantial loss of the capital invested. The author, publisher, distributors and all affiliates assume no responsibility for your trading or investment results, and will not be liable for any loss, damage or liability directly or indirectly caused by the usage of this material. There is considerable risk of loss in Futures, Stock and Options trading. You should only use risk capital in all such endeavors. No representation is being made that any account will or is likely to achieve profits or losses similar to those shown. Every reader/recipient is responsible for his or her own investment decisions. The information contained in this report or in any update does not necessarily mean that Daniele Prandelli, or any portfolio managed by any affiliates of Daniele Prandelli, or that any employees of the Daniele Prandelli, or his affiliates holds the positions or has conducted the actual trade. At various times Daniele Prandelli, portfolios managed by affiliates of Daniele Prandelli, or any other principal or employee of Daniele Prandelli may own, buy or sell the securities discussed for the purposes of investment or trading.

SOYBEANS

Contract: March 2019

Exchange: CBOT, ECBOT

Symbol: SH19

Expiration Date: 14/03/2019

First Notice Day: 28/02/2019

Multiplier: 5000

Here is the first Update of the 2019 Bulletin. We focus our attention to the March 2019 Contract, and before the Notice Day, we will send the next Update, which is due on February 27, 2019.

In the 2019 Soybeans Bulletin we talked about a possible period of uncertainty during the first part of the year, and we have to be very careful handling the Price Map analysis.

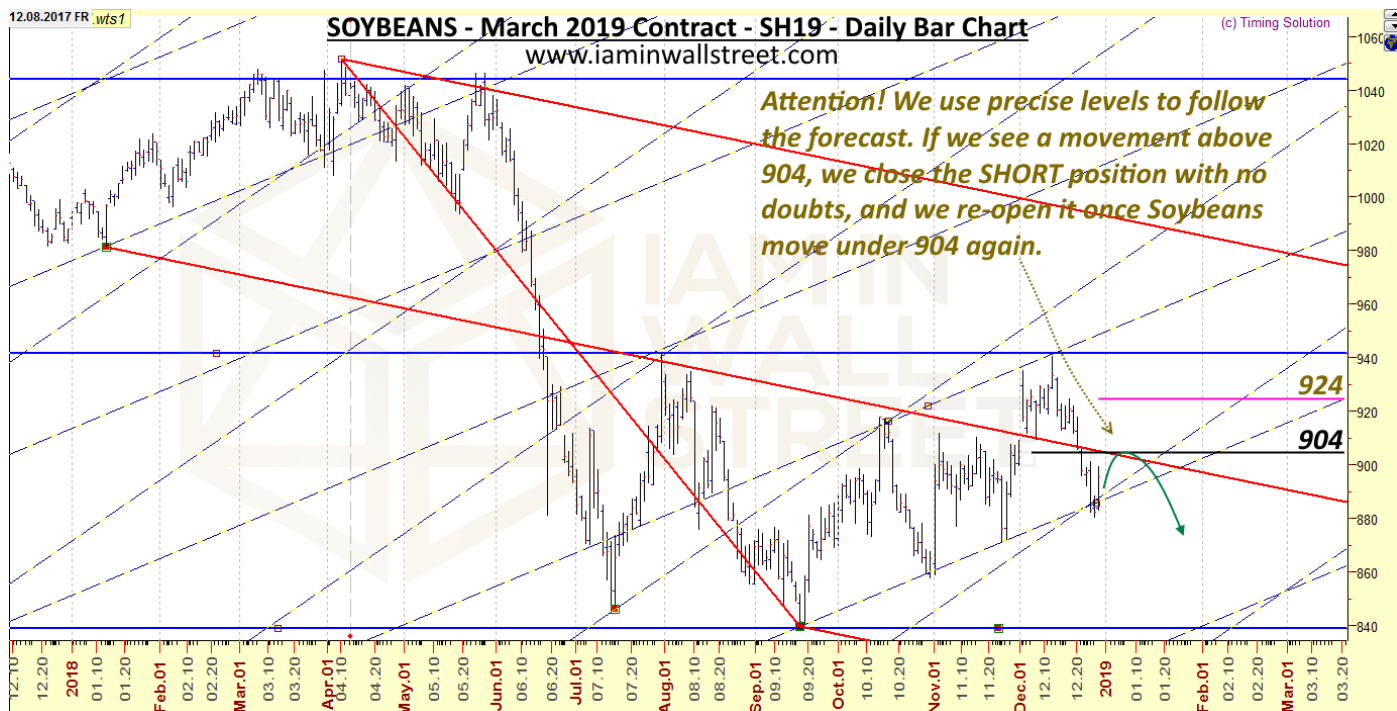
I confirm I am expecting to see weakness, which should start within the first two weeks of January, and the weak period should go on until February.

Attention to **January 25 (more or less), which should be an intermediate change in trend**; if we see a high, then we should see lower levels, and vice versa.

To confirm the scenario, I pay attention to the super **important area at 900**, and the more **precise level 904**; I mean, 900 is a very important level, and we should not be SHORT if Soybeans move above it; considering the level 900 may not be very precise, I use the Key Level at 904, trying to follow the downtrend under it.

I would not be surprised to see Soybeans remaining up in the first days of January (as you can see, the most important thing is the strategy and how to use it with precise levels). Any up push in the first days of the year do not change the favourite scenario anyway.

The chart here below shows my favourite scenario and the most important levels we should monitor.



It is evident the precise geometry at 840-940-1040, where we see a \$100 areas where the Market vibrates. Also the Andrew's Pitchfork may provide clues, as the parallel lines you see in the chart.

You know I am not that kind of person who uses many lines, indicators... because, in the end, we need a precise and clean strategy. My strategy plays with the level 904. Even if I have a few stops around it, I know I can let the SHORT position to run under 904, and have little losses using stops above 904. We are already SHORT and we have taken already some profits (as you could understand reading the Bulletin and the Updates of the previous year).

Here is the intraday chart that confirms the good levels we are using for our strategy:



What if the forecast is wrong and a new uptrend begins? I am not expecting that, but if it happens, I **monitor the level at 924**; I can use it to open LONG positions above it with always a STOP under it. I do not use this level to open SHORT positions, because we avoid SHORT positions when Soybeans are above area 900; we do it to increase the odds of being right; it is just the sum of a whole system.

For any question you have, please [contact us](#).

Good Trading!
Best Regards,
Daniele Prandelli

E-mail: info@iaminwallstreet.com

www.iaminwallstreet.com

High Probability Trading Techniques - S&P500, 30Y T-Bonds, Stocks, Corn, Soybeans, Wheat, Cotton, Crude Oil, Gold, Silver, Cattle, DAX30 and S&P/ASX 200.

DISCLAIMER Daniele Prandelli provides economic researches and analysis. The information contained herein is for general education and/or analysis purposes and is not intended as specific advice or recommendations to any person or entity. Any reference to a transaction, trade, position, holding, security, market, or level is purely meant to educate readers and/or analysis of the Market about possible risks and opportunities in the marketplace and are not meant to imply that any person or entity should take any action whatsoever without first evaluating such action(s) in light of their own situation either on their own or through a professional advisor. The methods presented are not solicitations of any order to buy or sell. If a person or entity does not believe they are qualified to make such decisions, they should seek professional advice. The prices listed are for reference only and are in no way intended to represent an actual trade, entry price or exit price conducted by Daniele Prandelli, portfolios managed by any entity affiliated with Daniele Prandelli, or any principal or employee of Daniele Prandelli, or any of his affiliates. This information is not a substitute for professional advice of any nature, including tax, legal, and financial. While we believe the information contained herein to be accurate, all numbers should be verified by the reader through independent sources. It should not be assumed that the methods, techniques, or indicators presented in these products will be profitable or that they will not result in losses. There is no assurance that the strategies and methods presented in this book, document or website will be successful for you. Past results are not necessarily indicative of future performance. Trading securities, options, futures, or any other security involves risk and can result in the immediate and substantial loss of the capital invested. The author, publisher, distributors and all affiliates assume no responsibility for your trading or investment results, and will not be liable for any loss, damage or liability directly or indirectly caused by the usage of this material. There is considerable risk of loss in Futures, Stock and Options trading. You should only use risk capital in all such endeavors. No representation is being made that any account will or is likely to achieve profits or losses similar to those shown. Every reader/recipient is responsible for his or her own investment decisions. The information contained in this report or in any update does not necessarily mean that Daniele Prandelli, or any portfolio managed by any affiliates of Daniele Prandelli, or that any employees of the Daniele Prandelli, or his affiliates holds the positions or has conducted the actual trade. At various times Daniele Prandelli, portfolios managed by affiliates of Daniele Prandelli, or any other principal or employee of Daniele Prandelli may own, buy or sell the securities discussed for the purposes of investment or trading.